



*e*MT SERIES 30000

Professional In Human Machine Interface

Per fectl y Designed
Extremel y Easy

————— *Professional in Human Machine Interface* —————

eMT3000 SERIES



Highest Standards · Aesthetic Appeal · Sturdy Aluminum Casing

- The high-speed 600/800 MHz microprocessor has an outstanding data processing architecture that enhances communication throughput and graphic display functionality to perform complicated animations and multi-page switching without delay
- Employs a sturdy aluminum casing
- Vivid screens including a new 12" 1024 by 768 pixel TFT display
- CANopen protocol support
- Isolation in 24VDC input
- Isolation in RS485/CAN bus
- Accurate and reliable touchscreens with a guaranteed lifespan of one million continuous key presses
- Industrial-Grade construction
- Aesthetically appealing

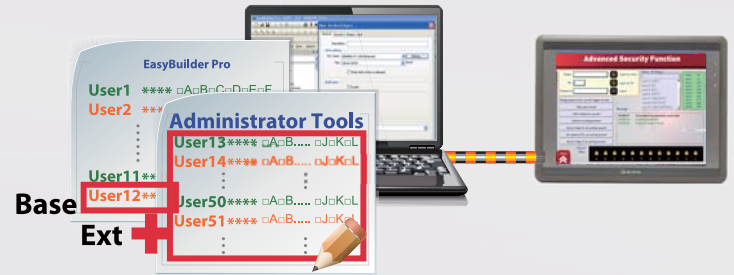
Enhanced Account Management

- Add/Delete Accounts
- Modify Privileges
- Reset Passwords



Extended User Accounts and Access Levels

- Extended user accounts (128)
- Extended access levels (14)



USB Security Key

Now you can assign access levels for specific periods of time



1. Create a USB Security Key via Administrator Tools

2. Restrict access to some operations in the HMI with the USB security key

Assign different access levels for objects or features to enhance security control

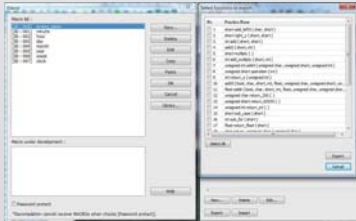


□ Powerful Connectivity



□ Powerful Macro Editor and Commands

- Macro syntax is similar to VB-Script. Users can use Macros to design the desired additional features.
- Powerful Macro commands support user defined protocols (free protocol) for other communication devices.
- Sophisticated features are designed for processing complex expressions and string manipulation. This enhances the communication between users and projects.
- The new Macro editing window with toolbars makes designing Macros extremely easy.
- Supports the creation of user-defined Macro Libraries. This feature allows Macro Libraries to be used in future HMI project designs.



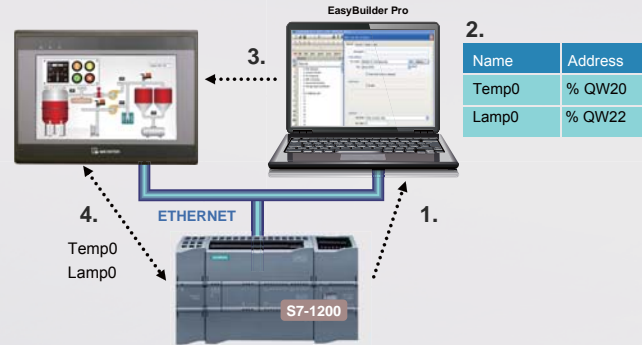
□ Use Label Tags to Display Multiple Languages

Label Tag Library a spreadsheet-like display for inputting text in different languages for application in a project. Export Label Tags in CSV format to Excel for editing. Language contents can then be edited further and imported to the Label Tag table.



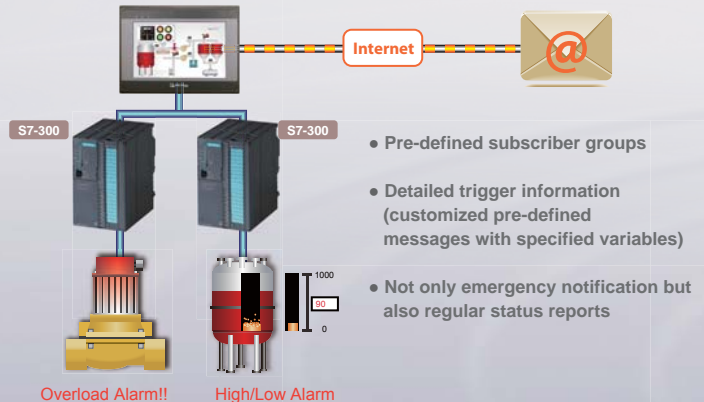
□ Address Tag

1. Get Tag Information
2. Edit Project with Tag Name
3. Download Project to HMI
4. Communication via Tag Name



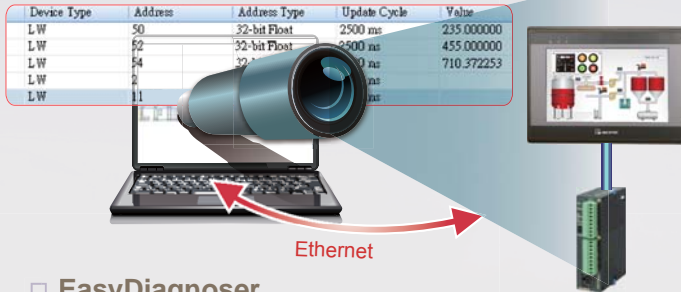
□ E-mail Notification

Inform personnel via E-mail when alarms occur

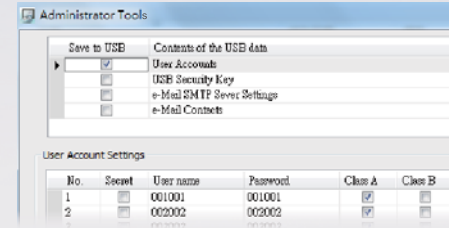


EasyWatch

A powerful tool for monitoring and modifying specific address values of remote HMI and PLC devices.

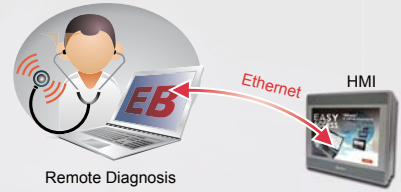


Account Management and E-mail Configuration via Administrator Tools



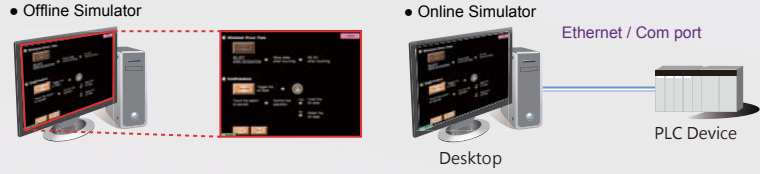
EasyDiagnoser

The EasyDiagnoser utility helps you to analyze and detect communications between the HMI and PLC.



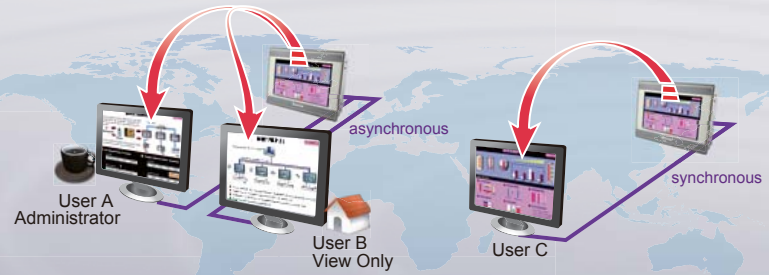
EasySimulator

During or after project programming, you can execute an Online Simulation on a PC by directly connecting it to your with PLC (10 min limit) or perform an Offline Simulation without the PLC.



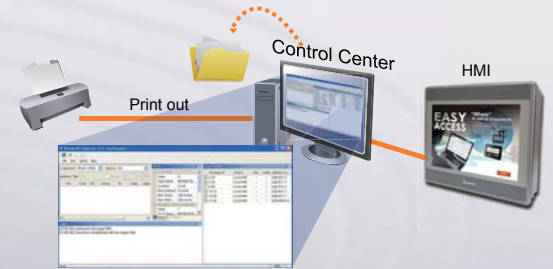
Easy Access

Via the innovative EasyAccess feature, you can easily manage your eMT3000 Series HMI on a network.




EasyPrinter

The Easy Printer Server application, for saving hardcopy or data backup, is independent from other EasyBuilder applications. It can be downloaded and run on a PC without installing the entire EasyBuilder application.



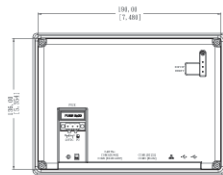


	Model	eMT3070A	eMT3105P	eMT3120A	eMT3150A
Display	Display	7" TFT	10.4" TFT	12.1" TFT	15" TFT
	Resolution / Color	800x480 / 16.7M	800x600 / 262K	1024x768 / 16.2M	1024x768 / 16.2M
	Brightness (cd/m ²)	500	400	500	350
	Contrast Ratio	500:1	400:1	700:1	700:1
	Backlight Type	LED	LED	LED	LED
	Backlight Life Time	30,000 hrs	30,000 hrs	50,000 hrs	50,000 hrs
Touch Panel	Type	4-wire, analog resistive			
Enclosure		Aluminum	Plastic	Aluminum	Aluminum
Memory	Storage (MB)	256 MB	256 MB	256 MB	256 MB
	RAM (MB)	256 MB	256 MB	256 MB	256 MB
Processor		32 Bit RISC CPU 600MHz	32Bit RISC CPU 800MHz	32Bit RISC CPU 800MHz	32Bit RISC CPU 800MHz
I/O Port	SD Card Slot	Yes	Yes	Yes	Yes
	USB Host	USB 2.0 x 1	USB 2.0 x 1	USB 2.0 x 1	USB 2.0 x 1
	USB Client	USB 2.0 x 1	USB 2.0 x 1	USB 2.0 x 1	USB 2.0 x 1
	Ethernet	10/100 Base-T	10/100 Base-T	10/100 Base-T	10/100 Base-T
	COM Port	COM1 (RS-232/RS-485 2W/4W), COM3(RS-232/RS-485 2W), CAN bus			
	Audio	Audio Line Out - 3.5 mm jack x 1			
	Video Input Port	NTSC/PAL RCA x 2		NTSC/PAL RCA x 2	
RTC		Built-in	Built-in	Built-in	Built-in
Power	Input Power	24±20% VDC	24±20%VDC	24±20%VDC	24±20%VDC
	Power Consumption	400mA@24V	800mA@24V	850mA@24V	900mA@24V
Specification	Panel Cutout (mm)	192 x 138 mm	259 x 201 mm	305 x 231 mm	352 x 279 mm
	Weight (kg)	Approx 0.9kg	Approx 1.6kg	Approx 2.1kg	Approx 2.75kg
Operation	Protection Structure	IP66 front panel (O ring seal)	IP65 front panel (O ring seal)	IP66 front panel (O ring seal)	IP65 front panel (O ring seal)
	Storage Temperature	-20°~70°C (-4°~158°F)	-20° ~ 60°C (-4° ~ 140°F)	-20° ~ 70°C (-4° ~ 158°F)	-20° ~ 70°C (-4° ~ 158°F)
	Operating Temperature	0°~50°C (32°~122°F)	0°~50°C (32°~122°F)	0°~50°C (32°~122°F)	0°~50°C (32°~122°F)
Certification		EN 55022:2006+A1:2007 , EN 61000-3-2:2006+A2:2009 .EN 61000-3-3:2008, EN 55024:1998+A1:2001+A2:2003			

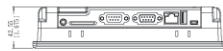
eMT3070A



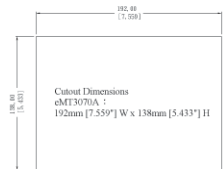
Front View



Rear View



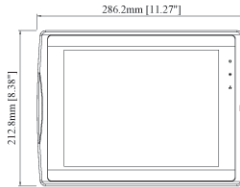
Bottom View



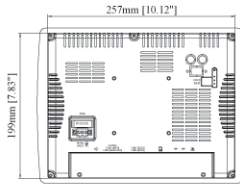
Panel Cutout

Cutout Dimensions
 eMT3070A :
 192mm [7.559"] W x 138mm [5.433"] H

eMT3105P



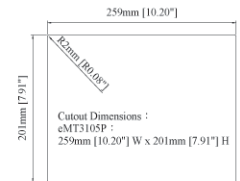
Front View



Rear View



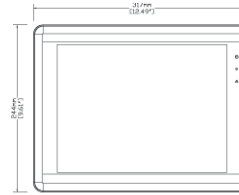
Bottom View



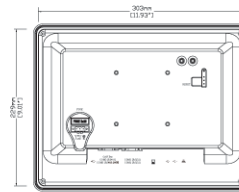
Panel Cutout

Cutout Dimensions :
 eMT3105P :
 259mm [10.20"] W x 201mm [7.91"] H

eMT3120A



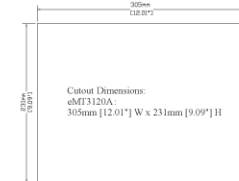
Front View



Rear View



Bottom View



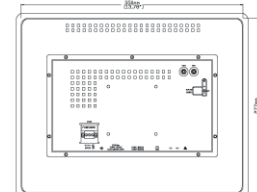
Panel Cutout

Cutout Dimensions:
 eMT3120A :
 165mm [6.50"] W x 121mm [4.76"] H

eMT3150A



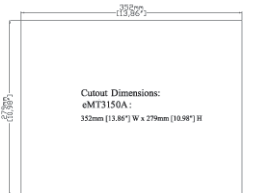
Front View



Rear View



Bottom View



Panel Cutout

Cutout Dimensions:
 eMT3150A :
 352mm [13.86"] W x 279mm [10.98"] H

Weintek places a high value on Product Quality Assurance.

Weintek is very proficient in Software/ Hardware Research and Development, and also possesses strong product manufacturing abilities and quality control. For quality control, Weintek strictly enforces ISO9000 standards. From bringing raw materials into the factory to manufacturing and production, a variety of testing equipment and software are applied, such as: vibration testing, low/high temperature testing, touch testing, performance testing, and communication testing...This guarantees that all products from Weintek to your hand are subjected to strict quality checking systems.



In addition to the rigorous standard testing process, Weintek professional testing engineers provide dedicated testing processes for the special features of different types of HMI. By accumulating professional testing experience, when evaluating a specific product, problems can be identified and solved faster and more accurately.



Our HMI products pursue the highest standards for research and development, design, and production. While designing the products, the standards and testing processes of materials, parts, tools, and equipment are all carefully managed to comply with international safety standards and environmental protection: CE/UL/RoHS



In addition to the above, Weintek provides great customer service by establishing 2 major systems: Customer Relationship Management (CRM) system and Service Request for feedback. Weintek not only meets quality standards completely, it goes beyond the customers' expectation of product reliability.





Taiwan · Weintek

Since the foundation of the company in October of 1995, Weintek Labs., Inc. has been committing itself to being a leading-edge designer and manufacturer of graphic operator interfaces, also known as HMI (Human Machine Interfaces), in Taiwan. We took our rich experience as HMI specialists and set the HMI product standard with state-of-the-art technology, efficient manufacturing, conscientious and careful testing, and global specialized support.

The company's missions are to provide its customers with quality products and superior service as well as to share the fruits of its good teamwork with all of its employees, by which we are able to achieve the goals of establishing a reputation as a leading brand in the industry and ensuring sustainability of the operation and development of enterprise.



WEINTEK LABS., INC.
Taiwan

Address: 9F., No.910, Zhongzheng Rd., Zhonghe Dist., New Taipei City 23586, Taiwan

Tel: +886-2-22286770

Fax: +886-2-22286771

Website: www.weintek.com

Sales: salesmail@weintek.com

Product Support: servicemail@weintek.com



ISO 9000: 2008

English | Feb 2012